



What I should already know:

There are four seasons in a year.
 Trees can be deciduous or evergreen
 Many wild creatures live around us

By the end of this unit I will know:

In autumn some trees lose their leaves.
 There is a variety of insects and mini-beasts around our local area.
 We use our senses to consider what clothing to wear during different seasons of the year.
 Different seasons have different weather patterns.



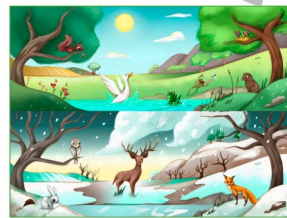
Horse chestnut Summer
 Horse chestnut Autumn



Holly Summer
 Holly Autumn



Changing seasons



Year 1: Our Changing World

Autumn Term



Working Scientifically

Identifying and classifying.
 Observing closely, using simple equipment
 Gathering and recording data to help in answering questions.
 Using observations and ideas to suggest answers to questions.
 Asking simple questions and recognising that they can be answered in different ways.



Vocabulary

Autumn	The season when warm summer temperatures gradually decrease to the cold of winter.
Deciduous	Trees which lose their leaves in winter and grow new ones in the spring.
Evergreen	Trees or bushes which are green all year round.
Leaves	The usually flat part of a plant that makes food for the plant. It is usually green.
Min-beasts	A small creature that does not have a backbone
Seasons	The regular changes in weather that occur throughout the year. There are four seasons.
Spring	The season when trees, plants and flowers start to bud, grow and bloom. Usually from
Summer	The hottest season of the year. Usually June to August.
Weather	What the sky and air are like outside, such as rainy, sunny, cloudy.
Winter	The coldest season of the year., Usually from December to February.

Investigation:

Do all trees lose their leaves in winter and grow new ones in spring?
 Which animals live around our school?
 What can we see and hear that shows us that the seasons are changing?

