



What I should already know:

In autumn some trees lose their leaves.

There is a variety of insects and mini-beasts around our local area.

We use our senses to consider what clothing to wear during different seasons of the year.

Different seasons have different weather patterns.

By the end of this unit I will know:

Which flowers are commonly grown during Spring.

How plants grow from seeds.

The common birds that visit our school grounds.

Each season has a typical weather pattern.



Bluebell Daffodil



Dandelion Daisy



Horse chestnut Cherry blossom



Tomato



Year 1: Our Changing World

Spring Term



Working Scientifically

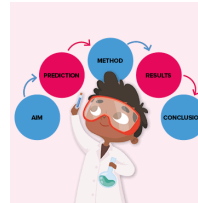
Identifying and classifying.

Observing closely, using simple equipment

Gathering and recording data to help in answering questions.

Using observations and ideas to suggest answers to questions.

Asking simple questions and recognising that they can be answered in different ways.



Vocabulary

Blossom	The flowering part of a plant or tree that will form the seeds or fruit.
Common garden birds	Birds that are found regularly in our gardens: Blue tit, starling, blackbird, chaffinch, robin, magpie, greenfinch, sparrow.
Compost/soil	Fertilised soil that is used to grow plants in.
Flower	The reproductive structure in flowering plants. It is usually brightly coloured.
Petals	The brightly coloured parts of the flower that surround the reproductive parts of a flower.
Stalk	The main stem of a plant.
Stem	The part of a plant that supports the branches, leaves and flowers. It helps take water and nutrients around the plant.
Weather	What the sky and air are like outside, such as rainy, sunny, cloudy.
Weather forecast	A statement of what the weather is likely to be for the next day or few days.

Investigation:

What flowers do we find during different seasons?

How do plants grow over time?

How many birds visit our feeding station?

How does the weather change across the seasons?

