



What I should already know:

Food chains are important for the survival of different species

By the end of this unit I will know:

Food chains are broken by habitat disruption or removal of a species from an eco-system.

Humans can positively and negatively change the environment locally and globally.

The positive and negative that affect their local environment.

The impact of global issues, such as deforestation, ocean pollution and global warming on eco-systems

What's the human impact?



Investigation:

What impact do humans have on their local area?

Why does clearing litter matter?

YEAR 4: Who am I?
Science: Human Impact



Working Scientifically

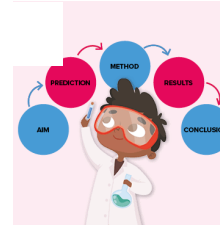
Identifying differences, similarities or changes related to simple scientific ideas and processes

Gathering, recording, classifying and presenting data in a variety of ways to help in answering questions

Reporting on findings from enquiries, including oral and written explanations, displays or presentations of conclusions

Using straightforward scientific evidence to answer questions or to support their findings

Recognising statements that do and do not support an argument .



Vocabulary

Climate change	Long-term shifts in temperatures and weather patterns
Conservation	Prevention of wasteful use of a resource
Deforestation	The action of clearing a wide area of trees
Eco-system	A biological community of interacting organisms and their physical environment
Endangered	Seriously at risk of extinction
Environment	The surroundings or conditions in which a person, animal or plant lives or operates
Food chain	A series of organisms each dependent on the next as a source of food
Global issue	Matters which affect the whole world
Habitat	The natural home or environment of an animal, plant or other organism
Impact	The marked effect or influence upon something
Pollution	The presence in or the introduction into an environment of a substance which has harmful or poisonous effects

Food Chains

