

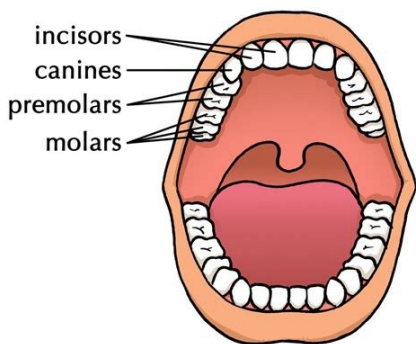


**What I should already know:**

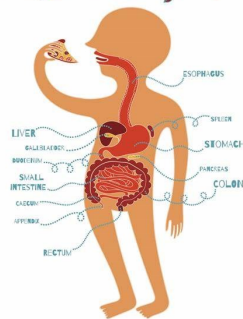
The parts of the body and what they do  
 All animals need water, air and food to survive.  
 Animals get nutrition from what they eat.  
 Humans and some animals have skeletons and muscles for support protection and movement .

**By the end of this unit I will know:**

The main parts of the body associated with the digestive system.  
 The function of the organs in the digestive system.  
 How food is broken down through mechanical and chemical processes.  
 How to identify different types of teeth and the roles they have in breaking food down.



**Digestive system**



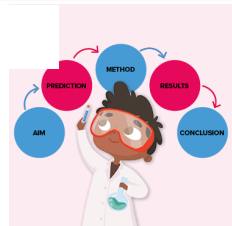
**YEAR 4: Where does all the food go?**

**Science: Biology**



**Working Scientifically**

Asking relevant questions and using different types of scientific enquires to answer them



Gathering, recording, classifying and presenting data in a variety of ways to help in answering questions

Making systematic and careful observations and, where appropriate, taking accurate measurements using standard units, using a range of equipment, including thermometers and data loggers.

Using straightforward scientific evidence to answer questions or to support their findings.

Identifying differences, similarities or changes related to simple scientific ideas and processes.

Reporting on findings from enquiries, including oral and written explanations, displays or presentations of results and conclusions.

Using results to draw simple conclusions, make predictions for new values, suggest improvements and raise further questions.

Setting up simple practical enquiries, comparative and fair tests.

**Vocabulary**

Canine	Pointed teeth near the front of the mouth of humans and some animals
Decay	Gradually destroyed by a natural process
Digestion	Breaking down ingested food material
Enamel	Hard white substance that forms the outer part of a tooth
Excretion	Process of eliminating faeces, urine and sweat from the body
Faeces	Solid waste substance tat people and animals get rid of from their body by passing it through the anus
Incisor	Teeth at the front of the mouth which are used for biting in to food
Intestines	Tubes in ht e body through which food passes when it has left your stomach
Molar	Large, flat teeth towards the back of the mouth that are used for chewing
Muscles	Something inside the body which connects two bones and which you use when you make a movement
Nutrition	The process of taking food in to the body and absorbing the nutrients in those foods
Oesophagus	Part of the body that carries the food from the throat to the stomach
Organ	Part of the body that has a particular purpose
Plaque	Substance containing bacteria that forms on the surface of teeth
Premolar	Two teeth situated on each side of both jaws between the first molar and the canine
Saliva	Watery liquid that forms in the mouth and helps to chew and digest food
Stomach	The organ inside the body where food is digested before it moves in to the intestines

**Investigation:**

Why do we have different types of teeth?  
 What do animals' teeth tell us?  
 How can we model the digestive system?

