

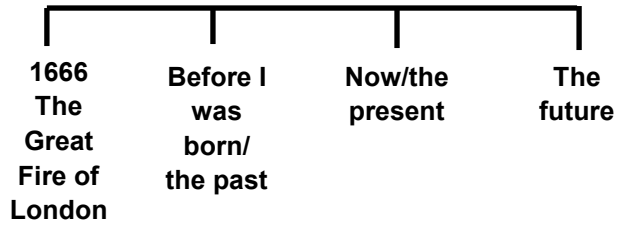


What I should already know:

Recollection of some significant events within their own life time.

Their grandparents are older and have lived longer than their parents.

TIMELINE



YEAR 1: History

Fire, Fire, Fire!



SAMUEL PEPYS

One of the ways we know about the fire is because people wrote about it on their own personal diary.

Key Events and Dates

When and where did the fire start?

The Fire of London started in a bakery in Pudding Lane on 2nd September 1666.

Why did the fire spread?

It hadn't rained for months so the city was very dry. In 1666 lots of people had houses made from wood which burns easily. Houses were built too close together and there was no organised fire brigade.

How did they fight the fire?

They used leather buckets and squirts filled with water, axes, fire hooks and gun powder to make fire breaks.

How did the fire stop?

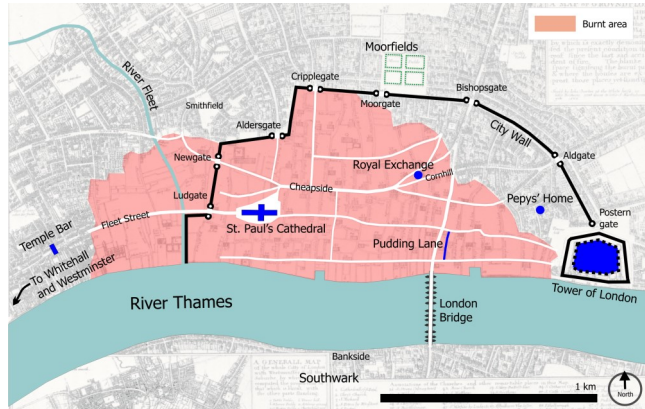
The fire burned for 4 days. As the wind died down and changed direction the fire became under control and was finally put out.

How many people died?

Six people died as a result of the fire.

What happened after the fire?

13,200 houses were destroyed by the fire and 70,000 people were left homeless. Many left London to live elsewhere and some slept in tents.



Vocabulary

Artefact	An object which helps us find out about the past.
Bakery	A place where bread and/or cakes are made and sold.
Diary	A personal record of life's events.
Differences	Partly or totally unlike in nature.
Embers	Small pieces of glowing coal or wood in a dying fire.
Eye witness	A person who has seen something and can give a description.
Flammable	When something burns easily.
London	The capital city of England.
Past, present, future	Words that help us explain when something happens.
Similarities	Being alike in some way/sameness or likeness.
Timeline	The order in which events happened.

Key facts at the end of the Unit:

The reasons why moments from our own past are important to us.
The Great Fire of London happened in 1666.
Samuel Pepys wrote a diary about the Great Fire of London which is why we know so much about it.
The Great Fire of London started in a bakery in Pudding Lane.
Charles II was the King of England in 1666.
BC – Before Jesus was born; AD—After Jesus was born.

By the end of this unit:

- Recognise changes within living memory and events.
- Identify significant historical events and learn about the Great Fire of London.